



# Human Environmental Impact

How do we affect Earth?

By, *Julio*

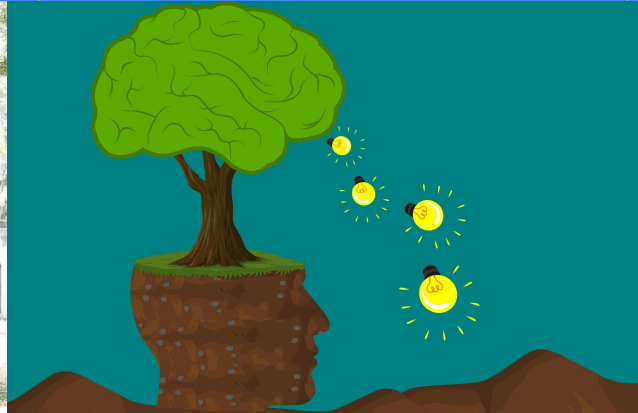


Human

Environmental

Impact

That a lot of people what to clean because god what day to feel what thing we need to do in real life



# Negative Human Impact

Car Air pollution

Garbage Trash

Power plants

Factories

Plastic

Using Natural

Resources

Pacific garbage]



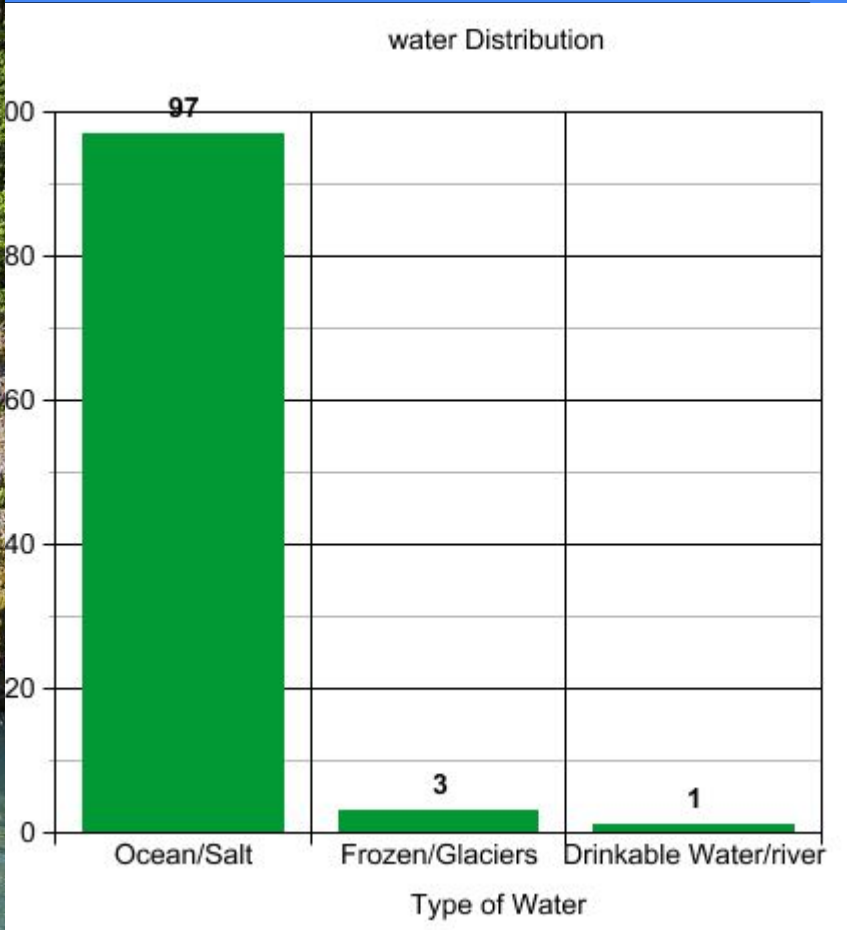
# Pollution

Oil spills because A Lot of people think that is good but not because people think that we have a lot of good water but we have less water

Livestock is bad because they put animals poop in the lake and that we get the most water and a lot of people what to clean but day dont have space to put the poop

Landfill is a bad thing because nobody think that the trash will think that it can dissapore because a lot of people what





# Non-Renewable Resources

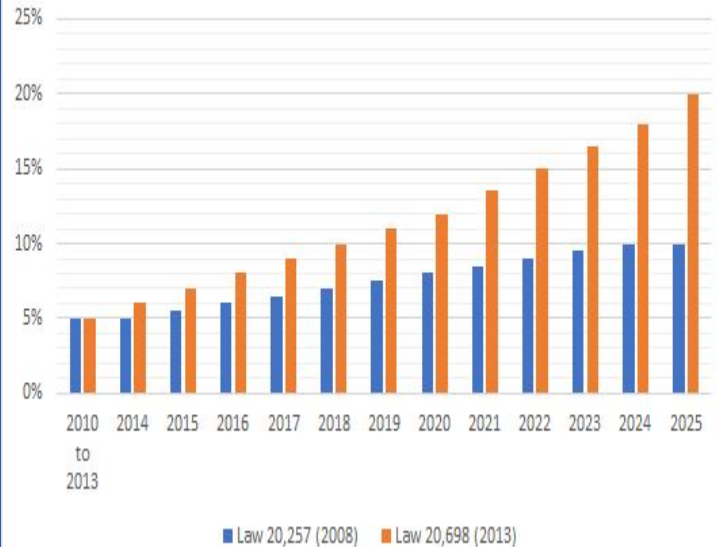
1 oil

2 Natural gas

3 coal



Chile's Non Conventional Renewable Energy Target



# Renewable Resources

## 1 solar energy

Solar energy is a thing that can power a lot of things from the sun

Geothermal

Energy

3 Wind Energy : use Windmills or wind Turbines.

4. Hydropower: Water power

# Renewable Energy Sources

## Advantages

WE will not run out of the resources

Natural resources are free

better/cleaner for the

Environmental

No waste

## Disadvantages

Building power station are Expansive  
Not always available  
Reliable  
Need to be close to  
The resource (location)